

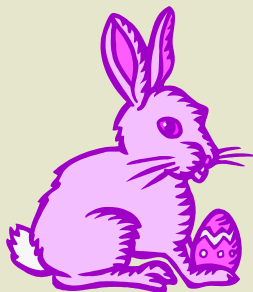


BETTER ENVIRONMENTS

TIME IS RUNNING OUT

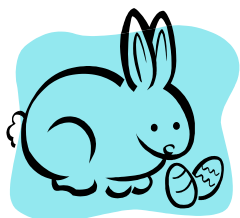
We want to welcome all of our new clients. We want to thank you, and we appreciate your business.

HAPPY EASTER



April Fool's Day

In Scotland, April Fool's Day is devoted to spoofs involving the buttocks and as such is called Taily Day. The butts of these jokes are known as April 'Gowk,' another name for the Cuckoo Bird. The origins of the "Kick Me" sign can be traced back to this Scottish observance.



The Green Garden Program, directed by Teri Boughn, was established and is sponsored by the West Basin Water District and the Metropolitan Water District. Residents of Rancho Palos Verdes, Palos Verdes Estates, Rolling Hills Estates and Redondo Beach, just to name a few, are qualified to receive a free "state-of-the-art" irrigation controller. However, you must have an operational sprinkler system and a controller/timer to participate in this program. Everything is FREE—the landscape survey, the controller and ten MP rotators. Once your survey has been completed, you will be notified either by e-mail or a telephone call as to when you can bring your old controller to a scheduled event, where you may exchange your old controller for a new Smartline Controller—a retail value of \$400. At this event, you can also pick up your FREE

sprinkler heads (MP rotators). Once you call and sign up for your survey, one of their representatives will come out and evaluate your home irrigation system. He will look for leaks and make recommendations to keep your landscape healthy. A specific time will be scheduled for your visit so you won't have to wait around all day. Please feel free to view the controller (SL 1600 model) at www.weathermatic.com. Please call (866) 861-0784 to make an appointment for your survey and to get more information. Once recommendations are made, please call our office to set up an appointment to install your new irrigation controller and sprinkler heads, and complete any recommended repairs. Don't miss out on this great opportunity. The program is scheduled to end in June 2010.

Landscaping With Natural Grasses

When people think of landscaping, often times they think of flowers, trees, hedges, and shrubs. But do you know that landscaping with natural grasses can lend an entirely new look to your landscape design? Natural grasses or ornamental grasses have become quite popular in the past several years since they offer many different colors such as cream, green, bluish green, brown, and more. Another benefit of landscaping with natural grasses is that most all varieties are perennials, returning naturally year after year, most often gaining in lushness as the years go by. Most natural grasses also have various flowering blooms for a short time before the long grasses reach their full height. The blooms of natural grasses can be quite dramatic with deep colors and wide blooms. If you feel like making a change to your current landscape by adding the dramatic flair that natural grasses have to offer, follow these guidelines to add a few species to your yard:

1. Decide upon the look you want for your yard by researching online the various varieties available to your growing zone.
2. It's best to use several varieties of grasses that will offer different textures, colors, heights, and blooms.
3. Group plants in conspicuous locations of your property such as next to patio railings, along sidewalks, underneath tall trees or inside and around a rock garden.
4. Mix tall and short grasses to create a blanket effect in lacking areas of your landscape.
5. Different grasses provide different colors of foliage, so make sure that you choose colors that will enhance the color of the outside of your house and fit in with the color scheme of your flower beds.

Low-lying natural grasses require little watering or maintenance. If you are not quite sure what types of grasses to plant, please call our office for a recommendation.

(<http://gardening.tips.net>)

April Landscape Maintenance Services Quarterly Report Card

Bennett Landscape values your continued patronage! We ask that you please participate in this quarterly survey. **We continuously strive to not only meet your expectations, but to exceed them! Please take a moment to fill out our questionnaire. We will follow up with you and make sure any issues or requests you have will be taken care of in a timely manner.** Upon return of this sheet, you will also be entered into our random drawing. *This month, the winner of our drawing will receive 3 flats of seasonal color. To be included in our drawing, all report cards need to be received by April 23rd. We will publicly announce the winner in our May 2010 newsletter.* Thank you!

Please rate the following: E = Excellent G = Good F = Fair P = Poor

Foreman: Attitude _____ Performance _____
 Crew: Attitude _____ Performance _____

Job Performance Overall: _____
 Responsiveness: _____
 How are requests handled? _____
 Communication: Crew _____
 Supervisor _____
 Office _____

Please answer the following:
 What do we need to improve upon?

Any special requests for your crew?

Is there any other work you would like us to estimate at this time?
 (Tree trimming, irrigation, design, planting, masonry, lighting, fencing, etc.) Please elaborate if possible.

Added Question: What other items or topics would you like to see in our monthly newsletter? We really want to know!

ADDITIONAL COMMENTS:

Print Customer Name: _____
 8 a.m.—5 p.m. Contact Telephone: _____
 Cell Phone/Alternate #: _____
 Property Address: _____

If you are interested in having your monthly maintenance bill or monthly newsletter e-mailed to you, please contact Jan on ext. 115.

Let's go green together!

Garden Benches & Porch Swings

There is nothing better than sitting outside on a cool, spring evening, swinging on your porch swing...unless, of course, you are sitting on your beautiful bench in your flower garden! Porch swings and garden benches are becoming more and more popular in landscaping designs because they allow a place for homeowners to "get away" for a little while.

When you need to escape the hustle and bustle of your busy city life, just take some time to sit on your bench or swing and look at the beauty you created in your own yard. We can help you make a selection that is perfect for your yard! Depending on your budget, we can custom- make your swing and/or bench by hand-painting or staining it. It can also be made into practically any shape, style, color or size. Please call our office if you are interested in adding a porch swing or bench to your landscape.



**PLEASE SET ASIDE THE DATE, SUNDAY,
APRIL 25, 2010; 1:30 P.M TO 5:00 P.M.**

Honda For Our Children Food and Wine Festival: Honda presents the 25th annual For Our Children Food and Wine Festival, partnering with Providence Little Company of Mary Foundation and Sandpipers. The Festival offers the best in food, wine and auctions. It is held on the grounds of the American Honda Motor Company Inc. in Torrance. Please contact the Foundation at 310-303-5340 for more information.

S O U T H C O A S T B O T A N I C G A R D E N A C T I V I T I E S

Ikebana, April 13, 20, 27: Elegance, grace and style are the characteristics of Ikebana. Learn the mechanics of manipulation and the observation of materials for their best usage in gaining the oriental view of flower arranging. Elementary, Moribana, Free Style, Traditional, Hanamai, Rimpa and Bunjin will be taught.

Successful Gardens, April 6, 13, 20, 27: Learn successful methods of gardening throughout the year; explore new and old favorite plants; discover intriguing secrets of the plant kingdom; expand your knowledge by visiting gardens and nurseries.

Basic Drawing, April 7, 14, 21,, 28: Learn to draw with basic techniques using several mediums including pencils, colored pens, pen, ink, charcoal, and pastel. You will learn extensive lessons in art theory and practice. Please bring a No. 2 pencil and paper to the first class. You will be provided with a supply list at the first class.

Please call 310-544-1948 for more information.